

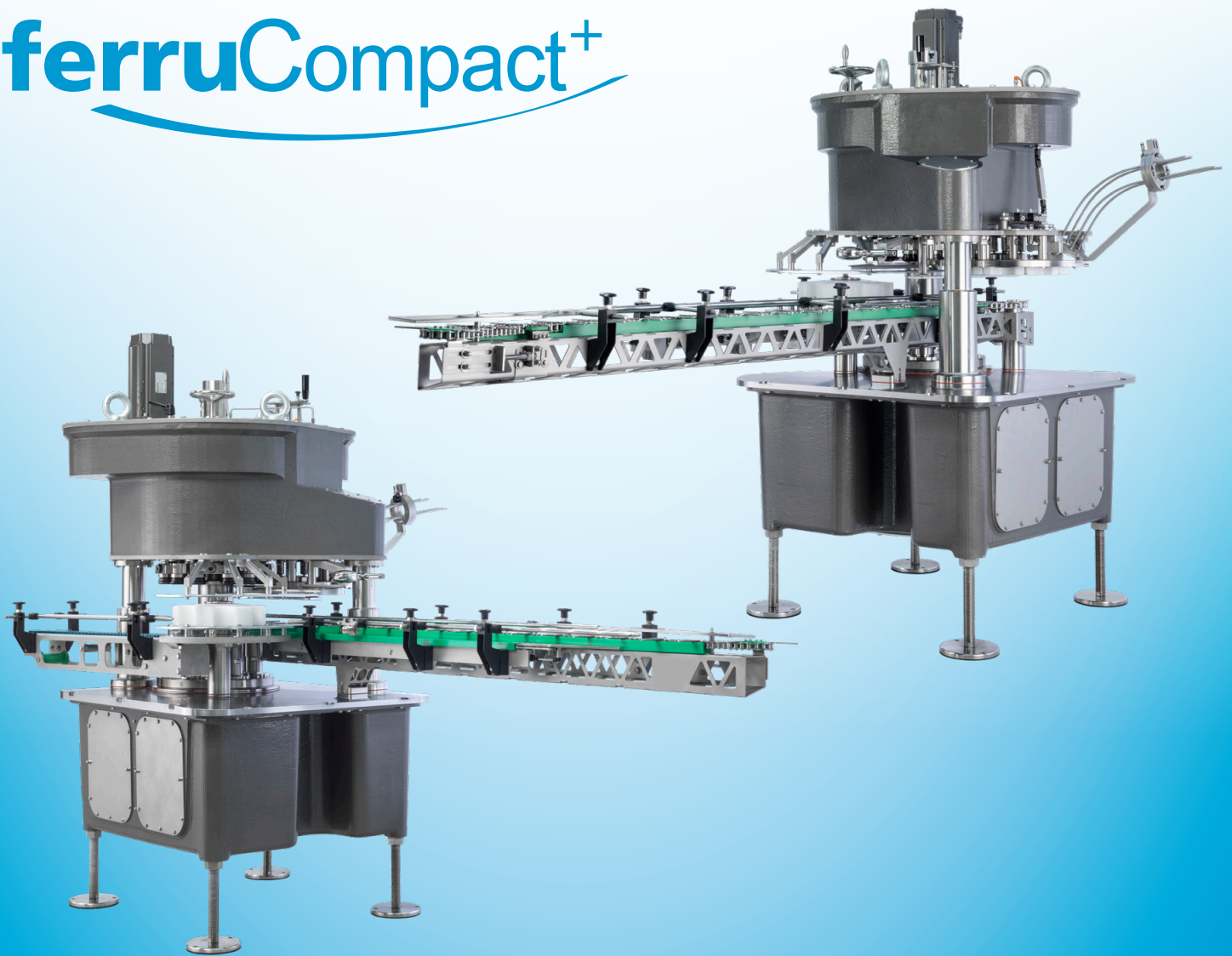
**CANNING TECHNOLOGY**

**ferruCompact**

**CAN SEAMERS FOR THE BEVERAGE INDUSTRY**

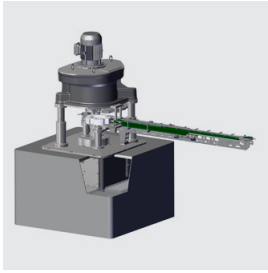


# ferruCompact<sup>+</sup>



The ferruCompact line is optimally suited to the needs of small and medium-sized breweries and beverage bottlers due to its performance and features. The machines are excellent to seam cans for mixed alcoholic beverages, beer and soft drinks. The seamer is suitable for applications in the food industry as well. Thanks to simple, intuitive operation and options such as the quick-change system for tools and the quick-set seaming cam, ferruCompact fulfills high expectations of the industry. The use of top value materials, coupled with Ferrum's proven quality, enables the ferruCompact can seamers to combine a long service life with low maintenance costs. Our service team is available around the clock worldwide, providing the full range of expert services and high availability of spare parts.

## Standard features FC03 / FC06 / FC08



### Flexible Integration

The synchronization between filler and seamer is done mechanically or electrically servo-driven. The connection to the filler is integrated into a filler-mono-bloc or with machine feet to place the seamer next to the filler.



Version with machine feet to place seamer next to the filler.



### Infeed table

The transfer chain is equipped with a safety clutch. The horizontal chain guide provides an extremely compact and hygienic design.

## Options



### Automatic height adjustment

This option allows automatic height setting. The controls are part of the customer HMI-menu. This allows an automatic setting to the desired height.



### Automatic Open Plant Cleaning (OPC)

The can seamer must be regularly cleaned to meet hygienic requirements. With the OPC system, all components in contact with cans in the seaming area, at the can outfeed, at the gassing rotor and optionally, at the infeed table are cleaned with a foam cleaning system.



### Flushing device

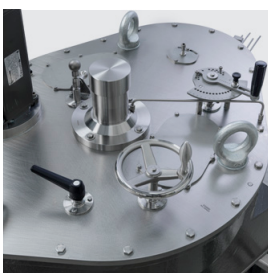
Heavy contamination such as beer foam or sugar residues may be dissolved and rinsed away from the seaming and lifting elements by the flushing function. The flushing process is carried out at short intervals whereat the cleaning time is kept below one minute.

## Standard features FC06 / FC08



### Quick changeover tools

The can seamers are equipped with quick changeover tools which reduce format changeover times significantly. The additional laser markings on the parts for each format, makes the changeover simpler and safer. After a systematic weight reduction, the weight of each change part is now limited to a maximum of 13 kg.



### Disengageable / Quick-set seaming cam

The disengageable 2<sup>nd</sup> OP allows easy and quick adjustment of the 1<sup>st</sup> OP without removing the 2<sup>nd</sup> OP roll. Furthermore the quick-set seaming cam also enables changeover between different can material thicknesses. The fine tuning allows a high precision setting for any seam thickness.



### Hygienic design

The ferruCompact line was designed to meet higher hygienic requirements. The inclined base plate and hygienically optimized designed change parts allow maximum drainage of liquids. The so improved surfaces prevent standing water on the change parts. All parts in seaming area are in stainless finish which may be cleaned with high efficient cleaning agents. With the inclined base plate, open machine design, exterior O-rings and angled surfaces, Ferrum is setting new standards in terms of hygiene.



# Benefits for the customer

- + Intuitive operation, convenient access and easy manual cleaning
- + Shorter cleaning times due to hygienic design
- + Minimal maintenance requirements
- + Short downtimes thanks to quick format changes
- + High availability of spare parts due to proven technology
- + Long life due to the use of stainless steel and other corrosionfree materials
- + No greasing access points thanks to a closed-loop oil lubrication system

## Technical data

Model		FC03	FC06	FC08
Seaming stations		3	6	8
Performance	cpm	80-355	130-750	330-1'000
Can height	mm	87-220	87-250	87-250
	(Imp)	(304-810)	(308-913)	(308-913)
Can diameter	mm	50-73	53-99	53-73
	(Imp)	(200-300)	(200-315)	(200-300)
Chain pitch	mm	152.4 / 161.9 / 171.5	133.4 / 142.9	95.25 / 104.775
	(inch)	(6 / 6.37 / 6.75)	(5.25 / 5.62)	(3.75 / 4.125)
Motor	kW	5.5	7.1 / 8.2	7.1 / 8.2
	(HP)	(7.38)	(9.5 / 11)	(9.5 / 11)
Lubrication		Oil recirculation	Oil recirculation	Oil recirculation
Controller power supply voltage*	VDC	24	24	24
Weight	kg	1'800	2'500	2'600
	(lbs)	(4'000)	(5'500)	(5'723)
Automatic, monitored oil lubrication system		●	●	●
Mechanical synchronization		●		
Electrical synchronization		●	●	●
Manual height adjustment		●	●	●
Infeed table with horizontal chain guide		●	●	●
Fixed seaming cam		●		
Disengageable seaming cam			●	●
Quick-set seaming cam			○	○
Compact and easy-to-clean construction, hygienically optimized		●	●	●
Quick changeover tools			●	●
Undercover gassing		●	●	●
Bubble breaker		●	●	●
Automatic height adjustment			○	○
Flushing device		○	○	○
Automatic Open Plant Cleaning (OPC)			○	○
Extension of end chute		○	○	○

● Standard ○ Option

\* The controller must be provided by the operator of the system.

## Dimensions

Scan for further information on machine layouts.



Ferrum Packaging Ltd | Industriestrasse 11 | 5503 Schafisheim | Switzerland  
T +41 62 889 13 11 | packaging@ferrum.net | www.ferrum.net

Technical changes are reserved.  
03.23 / EN / KLS / B / © Ferrum Packaging Ltd